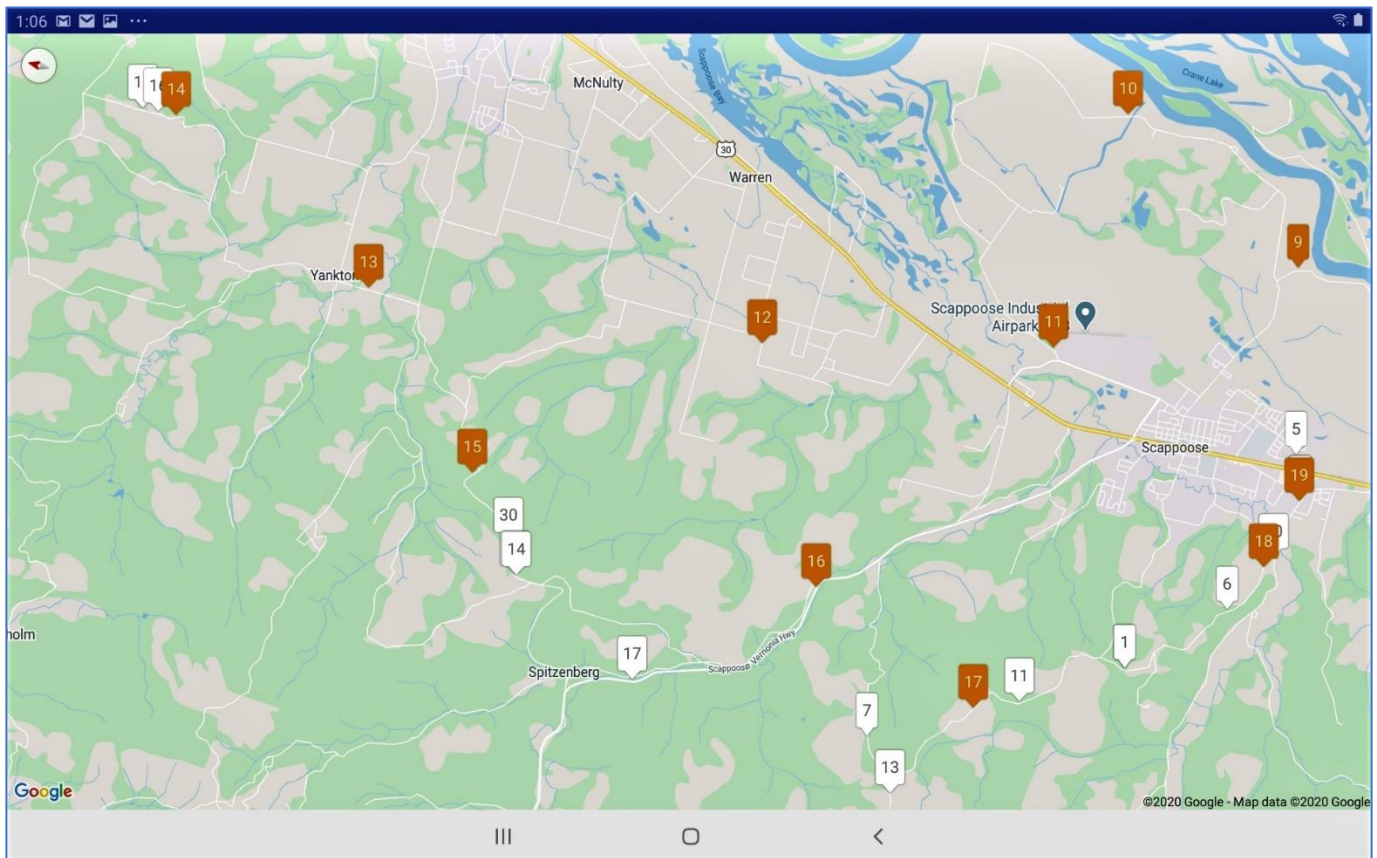


Saturday Road Rally Series - April 18

Promoted as an opportunity to get out and go for a fun drive in the country, while maintaining social distancing, the April 18 Saturday event was Cascade's second TSsD (Time Speed social Distance) road rally. "You stay in your car; we'll stay in ours."

Actually we stayed home. We managed registration and check-in online. All timing and scoring was done by the Richta GPS Checkpoints app, so there were no manned checkpoints. We monitored each car's progress using real time data from the GPS app, which adds a whole new level of rallymaster fun. First we get to drive around the countryside on roads less traveled, developing the rally course. Then we get to watch on a map as rally teams progress along those same roads in real time. Amazing.



Orange markers are GPS checkpoints. White markers are contestant cars.

Seventeen teams ran the rally - matching a record set in April 2019 of 17 cars at a Saturday rally. Eight of Saturday's teams had never run a Cascade rally before. We hope this great new bunch of Cascade ralliers will enjoy the game of road rally and want to come back and do it again and again.

SCCA National Road Rally Lifetime Points Holder Bob Morseburg drove down from Seattle Saturday morning to run the rally with his navigator, Cheri Eddy. We are honored they ran the rally (even though we didn't see them).

With the current lack of face-to-face contact with ralliers, and with so many new folks, we received several questions and comments via email and text. Rather than respond individually, they are presented here. The questions offer a chance to teach some rally, so have your [Road Rally Rules](#) handy.

Geargrinders News continued...

Questions:

- **Will we see you** [the rallymasters] at all today?

Answer: We are with you in spirit and we'll be watching your progress on our rally map. But we're not there. We've done our part. Now it's your turn.

- **We [made a wrong turn]** but we didn't turn around right away [so] we were max late at [the next] PC ... and thought we needed to make up time... so we went a little fast and ended up [max] early at the next PC. Is it true that once we saw we were late to the PC that we should have just continued following the route instructions (and CAST speeds) to the next PC?

Answer: Yes. "Your arrival time [at a passage control] is the start time for your next leg, so you should continue rallying on time." (RRR 1.3) As soon as you pass a passage control, you should consider yourself on time and keep rallying on time, regardless of whether you were late or early on the just-completed leg. Each leg is scored independently. You can't make up time in the next leg. Which begs two more points:

- "Contestants must obey all traffic laws and drive in a safe manner throughout the event." (RRR 1.6) At no time should you exceed posted speeds during a road rally. Rally speeds (CASTs) are set below posted speeds to allow for occasional slowing required for curves, intersections, traffic, etc.
- "If you are delayed along the rally route for any reason, submit a time allowance...do not speed to try to make up the lost time." (RRR 1.5)



Here's **how to use a Time Allowance** in a case like this. Hypothetically, you're driving at CAST. The mileage for the next NRI comes up and the reference you're looking for isn't there. You keep driving along at CAST until you finally decide that you've taken a wrong turn. At that point, you note the time and your trip mileage, you u-turn and drive at CAST back to the point where you know you're back on course. Note the time and mileage. Calculate how long it took you drive back to the course at CAST, double that amount of time and enter a Time

Allowance (TA+) in the Richta Competitor app equal to or greater than the amount of time you lost. Wait out any extra time, then continue following the NRIs at CAST. Calculate how many extra miles you drove and add that to the mileages for upcoming NRIs until the next mileage reset.

Here's **how to enter a Time Allowance in the Richta Competitor app**:

http://www.cascadegeargrinders.org/Files/Competitor_Richta_App_Instructions.pdf

Geargrinders News continued...

- We are confused by the **House of Stones challenge**. We didn't go left because it seemed like dead end. We did pause. Should we have ignored the entire instruction?

Answer: Yes. Here's the instruction: L at "HOUSE OF MANY STONES". PAUSE 30 seconds. ITIS.



You're looking for an opportunity to go left and pause at a sign saying "HOUSE OF MANY STONES" if there is such (ITIS). You should execute an instruction containing ITIS only if you can do it before the next NRI, otherwise you should skip it (RRR 6.12). In this case, the sign clearly comes up before the next NRI. So you should do it, right? Wrong.



You can execute a deviation (L is a deviation) only if it takes you in a direction different than the main road (RRR 6.13). At this T intersection, the main road goes left (RRR 3.6) so the correct action here is to follow the main road and go left at the T (at the stony house sign) and skip the ITIS instruction, including skipping the 30-second pause. Don't feel bad if you didn't get this one right. Understanding main road is fundamental to Cascade road rallying. You'll have many opportunities to practice.

It's interesting that they didn't go left because it "seemed like a dead end". There is nothing marking this left opportunity as a dead end as described in RRR 2.2. It is a public through road.

- We missed the turn on Johnson's Landing, our fault. It ends at the water and the continuation is on Dike Road, **not mentioned in the NRI**.

Answer: This refers to the intersection of Johnsons Landing and Dike Road. At this intersection, Johnsons Landing Road continues as a straight off, with a back-facing stop sign at the intersection, while Dike Road

Geargrinders News continued...

continues as the main road in a sweeping curve to the left. The clue here is the back-facing stop sign. The main road continues on Dike Road, with no need for a route instruction, since the road straight ahead (Johnsons Landing) has a back-facing stop sign (RRR 3.3). You don't need a route instruction to tell you to stay on the main road just because the road name changes. Again, learning to follow the main road improves rally success!

- Missed the turn on (Holaday). **What do the parentheses mean?** Knew quickly as the road ahead was gravel. Answer: Here's the instruction: OM 5.60 NRI 60. L (on HOLADAY). CAST 30.



“Text within parentheses is to be considered clarifying comments. Any action suggested within parentheses, while probably helpful, is not mandatory.” (RRR 4.9)

Since there are no signs identifying road names at this intersection, your only clue about where to make this turn is the mileage. Mileage is often helpful; in this case, mileage is essential.

There is a sign down the road a ways identifying the road as HOLADAY. The parenthetical comment is intended to relieve any anxiety about whether you're on the right road.

Good thing this rallier remembered that we said there is no gravel on this rally route. If you find yourself on gravel, you're off course.

- We were late because **the rally car in front of us was driving slowly** and we couldn't find a safe place to pass.

Answer: Practice safe rally etiquette. Do not tailgate; do not pass in no passing zones or in other unsafe situations (RRR 1.6). If traffic is impeding your ability to follow the course at CAST, find a safe place to pull over and take a Time Allowance.

- In the latter part of the rally we were with another car. Would a **longer time between cars** be considered?

Answer: One-minute separation between rally cars is optimum. However, cars can get off their minute and find themselves with inadequate space between them and the car in front of them. When we have a scenic break location that can adequately handle the number of rally cars expected, we will include a time of day restart, similar to the start of the rally, which puts the cars back in order and on one-minute out time separation. This rally didn't easily allow for that. So what can you do to create more separation between you and the car ahead? Take a Time Allowance that puts you a half minute behind the car ahead of you.

Practice safe rally etiquette. Do not tailgate; do not pass in no passing zones or in other unsafe situations (see RRR 1.6). If traffic is impeding your ability to follow the course at CAST or if you find yourself trying to occupy the same point in space as another rally car, find a safe place to pull over and take a Time Allowance.

Geargrinders News continued...

- We would have liked a **longer break** midway - some time to look at a view or go potty or watch a squirrel.

Answer: We agree and we previously included a longer scenic break about mid-rally. However, the need for social distancing makes that more difficult. We'll try to find opportunities for a longer mid-rally break offering space for appropriate social distancing.

- When does one **graduate from Novice to SOP?**

Answer: You decide when you think you're ready. We recommend that you run at least one season before moving up from Novice to SOP, and then only if you feel you are able to stay on course most of the time.

Note, however, that you can win the First Place Novice season award only once. Since awards are given at the end of the season based on your performance within a class, best to not change classes mid-season. Choice of class within the Equipped category is based solely on equipment in use, not on experience. (RRR 7.0)



- What are the rules in regard to **using a smart phone GPS** for knowing where the turns are upcoming?
Separate phone from one with Richta app.

Answer: Although Cascade's rules for Competition Classes (RRR 7.1) does not address this specifically, it does state that Unequipped classes permit "only pen, paper, timepiece(s) and stock odometer. No calculation equipment allowed (including average mph display)." Since navigational systems are now standard on most new vehicles, this oversight should be corrected in the next version of the Road Rally Rules. Meanwhile, the Geargrinders Chair rules that use of GPS navigational systems, which are not providing time-speed-distance calculations, are permissible in all classes.

- Our iPhone **ran out of power**.

Answer: Remember to bring a power cord, keep the device you're running the Richta Competitor app on plugged in to power.

- My phone had to be **duct-taped to the dash**.

Answer: Clipboard, pen/highlighters, route instructions, rule book, cell phone running the app, maybe a stop watch - lots of stuff flying around inside the car during a rally. Navigators: How did you manage all your equipment?

Other comments:

- Enjoyed the odo; haven't been up this way in a good long while. [Odo ended in Forest Park.]

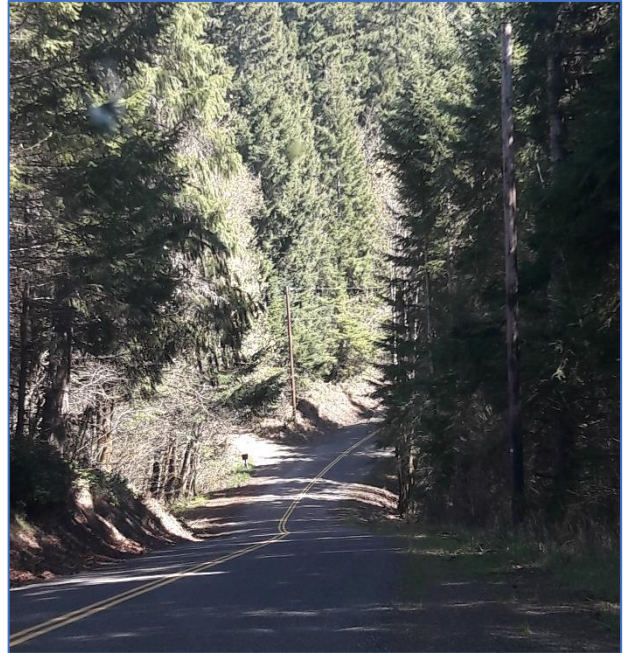
Geargrinders News continued...

- Thanks for putting together the rally. Great roads and we found some places to hike when this stay at home craziness is over. Had a great time.
- We had a really good time.
- We had a blast. We loved the rally app. Instructions were easy to follow and we appreciated NOT getting lost. It's no fun to be so tricked that you're hopelessly lost.
- Enjoyed the rally; great roads. Thank you for writing it; great event.
- This was my first TSD rally and I had a good time. Thanks for all the work you have done to set this up.
- Thank you for putting on the event. Good fun and really nice route. We missed a couple turns but no divorce so I considered it a win.
- Really enjoyed the rally. Got all the traps right. All-in-all an excellent rally. (Thank you for your kind words, Bob. Congratulations on your win!)

We received more than one question about the HOUSE OF MANY STONES main road challenge. But there were two more challenges on this rally that were either too easy or too hard because we didn't get any questions or comments about them.

There was no waiting around for the first challenge. It was in the first instruction after the end of the odo:

19. R on SKYLINE. CAST 33. Watch for bicycles on roadway next 1 mile.
20. CAST 35 at second "SPEED LIMIT 35".



If you didn't wait for a full one mile, you changed your speed too soon and arrived a bit too early at the control. (Maybe this was too easy.)

The other challenge required some math:

48. L on ROBINETTE. CAST 30 half the distance to the next route instruction, then CAST 40.
49. L on SMITH RD. SOL. CAST 38.

Since you didn't know the distance, you had to use time-speed-distance formulas to calculate what speed to travel the whole distance. (RRR 7.3) (Maybe this was too hard.)

And there were winners.

Congratulations to first overall and first Unlimited Bob Morseburg and Cheri Eddy, running as Car #30 after driving to the start from Seattle on the morning of the rally. Nicely done!

Two veteran rally teams tied for second overall and first SOP, Bill and Kelly Ferber and Marcus Gattman and Kerrie Steffenson. Congratulations to all!

Congratulations to fourth overall and first Novice Brian and Jamie Anderson. This team is moving up fast in their first season of road rally. They are the team to watch.

Congratulations to Andrew and Coralee Brewer for finishing first in the GPS class. The GPS class was introduced last season in the Equipped category of road rally competition classes. This class allows the use of GPS-sourced odometers. Few competitors have entered this class to date. Congratulations to the Brewers!

Geargrinders News continued...

CSCC Saturday Series Rally Results Yanked on Yankton

Saturday, April 18, 2020

Rallymasters: Monte and Victoria Saager



Car #	Team	Class	3	4	5	6	7	8	9	10	11	12	13	14	15	16	17	18	19	Total
30	Bob Morseburg / Cheri Eddy	UNL	4	5	36	25	28	29	64	0	5	3	1	4	5	1	1	0	0	211
3	Bill Ferber / Kelly Ferber	SOP	10	18	22	46	7	10	14	21	0	63	11	14	9	13	10	12	9	289
16	Marcus Gattman / Kerrie Steffenson	SOP	12	0	5	6	3	5	120	4	5	29	4	22	25	16	15	11	7	289
5	Brian Anderson / Jamie Anderson	NOV	14	10	24	25	21	17	113	29	12	53	1	10	19	29	10	17	4	408
6	Torm Kelsey-Green / Kasey Klaus	SOP	13	4	63	5	4	6	60	13	0	106	73	6	35	6	4	8	9	415
2	Andrew Brewer / Coralee Brewer	GPS	12	18	77	9	22	13	11	37	33	101	11	26	7	26	11	11	17	442
12	Nash Franca / Brett Walker	NOV	27	5	90	7	17	17	46	3	7	55	12	1	24	7	120	17	8	463
9	Jay Ward / Tina Ward	NOV	1	13	79	12	13	14	44	17	0	37	49	56	81	7	32	1	8	464
13	Robert W Carlson / Wayne Carlson	NOV	12	30	84	14	14	8	54	4	10	103	13	8	15	0	50	48	8	475
7	Bradley Bergstrom / Harmen Stiff	NOV	26	6	97	10	0	2	120	6	3	67	26	16	1	15	68	11	13	487
11	Ben Overton / Kyle Overton	NOV	16	2	90	14	5	5	84	48	20	50	35	50	43	9	9	7	10	497
4	Jolynn Franke / Julie Miletta	NOV	26	12	69	89	41	36	27	19	11	59	4	29	29	52	24	8	9	544
1	Kris Franca / Rich Franca	NOV	15	9	104	16	19	3	28	20	16	97	22	120	59	18	45	5	9	605
14	Edmund Frank / Eustacia Su	GPS	36	17	76	3	98	91	82	48	9	73	7	10	30	0	3	21	11	615
10	Michelle Rand / Jon Rand	UNL	71	58	15	72	13	19	99	101	18	45	28	20	24	36	13	30	21	683
17	Doug Heredos / Michael Heredos	NOV	29	14	109	33	28	44	24	24	36	73	120	120	120	62	98	13	10	957
15	Don Petersen / Joan Petersen	NOV	90	55	96	11	9	41	120	21	69	45	64	120	120	120	120	42	20	1163

Saturday Road Rally Series - May 16

Next up in the Saturday Road Rally Series is May 16. This rally starts at Milwaukie Lowe's. Watch for more details.

Entry requires a street-legal vehicle, licensed and insured driver, navigator, and a smart device (e.g., cell phone or tablet) running the Competitor Richta GPS Checkpoints app. The app will be used to time and score the rally.

\$20 per car for CSCC members, \$30 per car for non-members.

Required online registration is available through May 13: <http://msreg.com/CSCCMayRally>



CASCADE SPORTS CAR CLUB GEARGRINDERS 2020 TSD Road Rally Schedule*

UPDATE

as of 3/23/20

Read [Cascade Geargrinders Coronavirus Message](#)

Saturday Road Rally Series

March 21	Online registration required: MotorsportReg.com
April 18	
May 16	First car out: 10 am
June 13	\$20 per car for CSCC members (\$30 for non-members)
July 18	



Start location

Northeast corner of Lowe's parking lot, 13631 SE Johnson Rd, Milwaukie, OR 97222

Cascade's Saturday Series rallies are beginner-friendly time-speed-distance road rallies, lasting from 2 to 4 hours, starting and ending in the Portland area.

Special Events

August 22 – Game / Gimmick Rally - Test your trick-and-trap road rally skills in this fun rally. Without average speeds and checkpoint timing, scoring is based on correctly answering questions about things you see along the rally route.

September 19 – Mountains to the Sea – 55th anniversary of Cascade's classic rally. Full-day beginner-level tour-style time-speed-distance road rally, offering an all-paved scenic route that is fun to drive, ending with a BBQ dinner and a famous beach party at the Breakers Hotel in Long Beach, Washington.

October TBD – Ghouls Gambol – A Cascade tradition, this Halloween road rally explores the autumn colors around Portland's foothills and farmland. Caution: May include frights.



* For all 2020 Cascade road rallies, each car must have a cell phone (or other smart device) running the Richta Competitor app in order to participate.

www.cascadegeargrinders.org
rally@cascadesportscarclub.org

#CSCC Road Rally